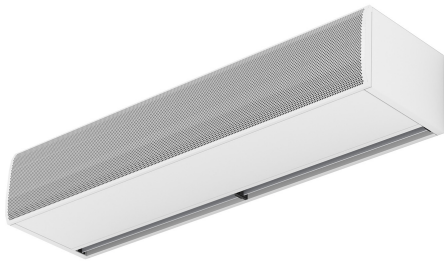




Vlastnosti



- Proiectat special pentru a fi instalat la u?ile camerelor frigorifice ?i congelatoarelor.
- Carcas? autoportant? f?cut? din plac? de o?el galvanizat, finisat? standard cu o vopsea structurat? RAL9016, de culoare alb?, din epoxi-poliester. Alte culori sau o?el inoxidabil, disponibile la cerere.
- Grilaj de admisie larg, fa?etat, f?r? mentenan?? intensiv?. Valabil ?i cu grilaj de admisie palt, micro-perforat ?i elegant, pentru u?ile comerciale unde nu este necesar? înc?lzirea.
- Palete de evacuare din aluminiu anodizat, cu form? aerodinamic?, ajustabil? pe fiecare parte de la 0 la 15°.
- Ventilatoare centrifugale EC cu admisie dubl?, alimentate de un motor extern cu rotor silen?ios, cu ventilatoare eficiente de consum redus.
- Tip "A" f?r? înc?lzire, doar aer.
- Advanced Plug&Play control. Includes: Advanced PRO control with LCD display and integrated thermostat, door contact, 10m and remote control. With integrated functions: door delay (configurable); interface mode; operation, alarm and maintenance warning signals; and multiple digital inputs that modify the air curtain's operation.
- Includes protective varnish for the electronic board and control.
- Optional:
 - Auxiliary temperature sensors that improve air curtain control and increase energy savings.
 - Clever PRO intelligent control (automatic, programmable, ModBus via PLC, timer, etc.) with an additional temperature sensor.
- Includes varnishing on the PCB to protect it from corrosion.

Specificace

50Hz

Model	Neoh?ivaná	
	(m ³ /h)	(m)
KBB 1000 A	5-7	
KBB 1500 A	5-7	
KBB 2000 A	5-7	
KBB 2500 A	5-7	
KBB 3000 A	5-7	
KSB 1000 A	3,5-5	
KSB 1500 A	3,5-5	
KSB 2000 A	3,5-5	
KSB 2500 A	3,5-5	
KSB 3000 A	3,5-5	

60Hz

Model	Neoh?ivaná	
	(m ³ /h)	(m)
KSB 1000 A	3,5-5	
KSB 1500 A	3,5-5	
KSB 2000 A	3,5-5	
KSB 2500 A	3,5-5	
KSB 3000 A	3,5-5	

Rozměry

View from the top / Vista superior



Lateral View / Vista Lateral

View from the bottom / Vista inferior



L	A	B
1000	920	-
1500	1420	710
2000	1920	960
2500	2420	1210
3000	2920	1460